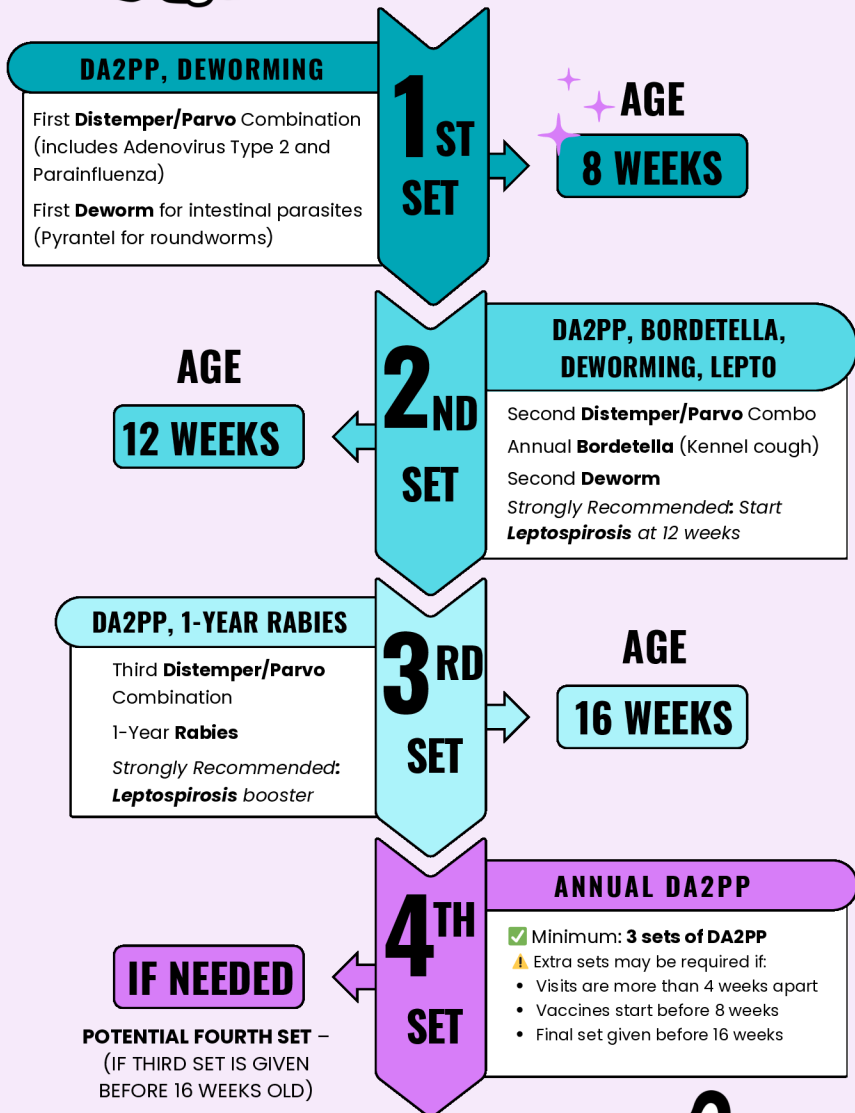


VACCINATION SCHEDULE PUPPY



VACCINATION SCHEDULE ADULT DOG



All dogs 16 weeks and older receiving their first vaccinations will require two sets of DA2PP given 3–4 weeks apart.

The vaccinations included in the final set are current for one year.

When they return a year later, they will be given a DA2PP and Rabies vaccination good for three years.

OPTIONAL: Lyme & Influenza
→ 1-year coverage, then 3-year
DA2PP & Rabies at annual visit.



**HUMANE
SOCIETY
OF UTAH**