

NEW CAT PARENT



Tips for your newly adopted family member.

Cat Proofing

When the decision is made to make a new pet part of the family, providing a safe environment for them is important. Steps should be taken to prepare your home and yard for your new cat to eliminate any dangers.



Buying Supplies

Don't forget the basics:

- Collar, ID tag
- Litter box, litter, scooper
- Water dish, food puzzle
- Bed, scratching post, toys
- Harness, leash for walks

Transition Time

Give your cat 2-4 weeks to adjust to a new environment. Provide a quiet place for them to decompress.



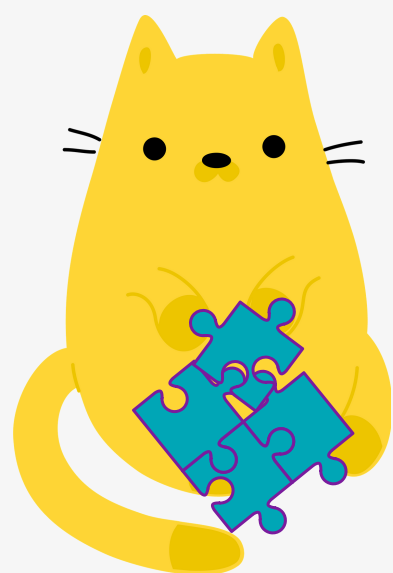
Introductions to Other Pets

- Keep your pets separated at first.
- Slowly let them see and smell each other.
- Supervise a face-to-face introduction.

This process may take up to 2-3 weeks.

Exercise/Mental Stimulation

Exercise can help your cat maintain a healthy weight. It's also a great way to bond with your feline friend. Food puzzles, interactive toys and outdoor walks are all fun activities for your cat.



Congratulations on your new family member.
Thank you for choosing to adopt!